

D **Eventtextilien**

HABUTAI
Art. 1611-
Lasergewebe
Art. 1613 3011
Trevira CS VOILE
Art. 1612-
CS Taft
Art. 1614-
Ripstop
Art. 1615-

F **Toiles déco**

HABUTAI
Réf. 1611-
Toile laser
Réf. 1613 3011
VOILE CS
Réf. 1612-
Taffetas CS
Réf. 1614-
Toile Spie
Réf. 1615-

E **Event Textiles**

HABUTAI
Art. 1611-
Laser Scrim
Art. 1613 3011
Trevira CS VOILE
Art. 1612-
Taffeta CS
Art. 1614-
Ripstop
Art. 1615-

Bitte beachten:
In der Darstellung der Muster als PDF-Datei kann es technisch bedingt zu Farbabweichungen kommen.

Attention!
Photos non contractuelles.

Please note:
Photos of samples shown in pdf-file may vary slightly in colour due to technical reasons.



Chinaseide HABUTAI

100 % Seide.
Stücklängen ca. 45-50 lfm.
Sonderfarben ab ca. 90 lfm.

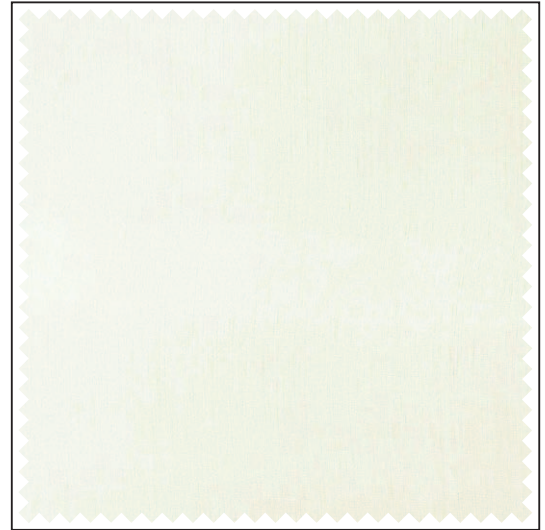
Soie de Chine HABUTAI

100 % soie.
Longueur des pièces env.
45-50 ml.
Coloris spéciaux à partir 90 ml.

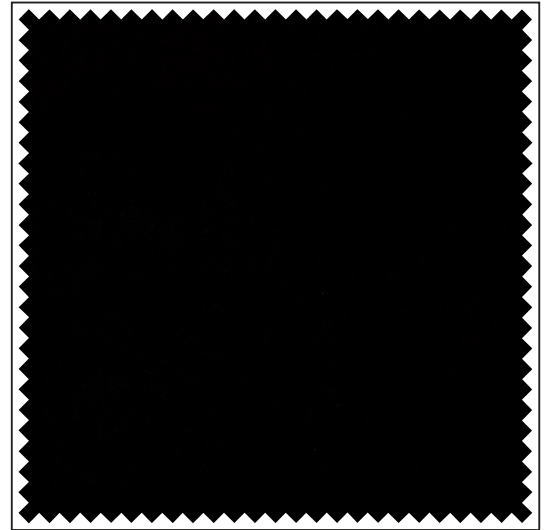
China Silk HABUTAI

100 % Silk.
Piece lengths approx.
49.2-54.6 yds.
Minimum quantity for custom dyed
colours approx. 98.4 yds.

Art. / Réf.	Farben	Coloris	Colours	B1	M1	EN	EN*	NFPA	↔ cm	ft/in	g/m ²	oz/yd ²
1611 2000	rohweiß	écru	ecru						140	55"	22	0.65
1611 2001	rohweiß	écru	ecru	•				•	140	55"	22	0.65
1611 2021	schwarz	noir	black	•				•	140	55"	22	0.65
1611 4000	rohweiß	écru	ecru						140	55"	45	1.33
1611 4001	rohweiß	écru	ecru	•				•	140	55"	45	1.33
1611 4021	schwarz	noir	black	•				•	140	55"	45	1.33



rohweiß / écru / ecru



schwarz / noir / black

Lasergewebe

54 % Polyamid, 46 % Trevira CS.
Stücklängen ca. 100 lfm.

Toile laser

54 % polyamide, 46 % trévira CS.
Longueur des pièces env. 100 ml.

Laser Scrim

54 % Polyamide, 46 % Trevira CS.
Piece lengths approx. 109.3 yds.

Art. / Réf.	Farben	Coloris	Colours	B1	M1	EN	EN*	NFPA	↔ cm	ft/in	g/m ²	oz/yd ²
1613 3011	grau-silber	gris-argent	grey-silver	•				•	300	118"	22	0.65



grau-silber / gris-argent / grey-silver

Erläuterungen der Brandschutznormen B1, M1, BS, EN, EN* und NFPA unter www.gerriets.com.

Informations concernant les normes de feu B1, M1, BS, EN, EN* et NFPA, consulter notre site www.gerriets.com.

For explanation of flame retardant standards B1, M1, BS, EN, EN* and NFPA, please go to www.gerriets.com.

B1 = DIN 4102 B1
M1 = M1
BS = BS 5867

EN = DIN EN 13501-1
EN* = DIN EN 13773
NFPA = NFPA 701

Trevira CS VOILE

100 % Trevira CS.
Permanent schwer entflammbar.
Stüklängen ca. 60 lfm.

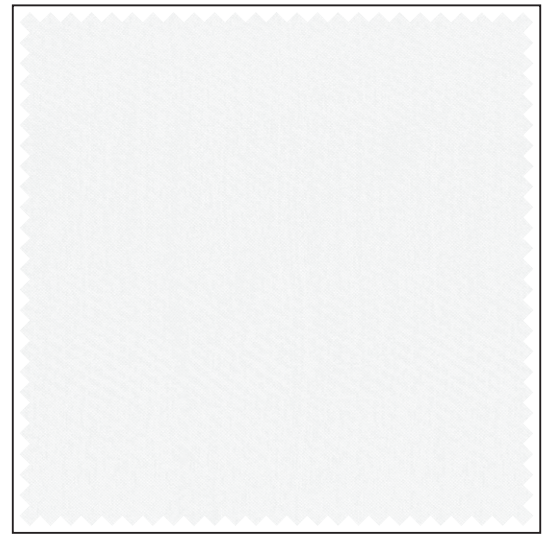
VOILE CS

100 % trévira CS.
Longueur des pièces env. 60 ml.

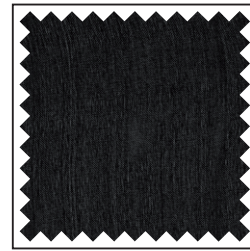
Trevira CS VOILE

100 % Trevira CS.
Inherently flame retardant.
Piece lengths approx. 65.6 yds.

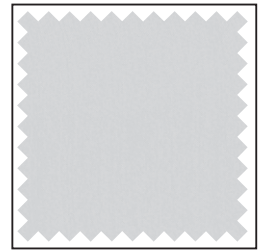
Art. / Réf.	Farben	Coloris	Colours	B1	M1	EN	EN* NFPA	↔	cm	ft/in	g/m ²	oz/yd ²
1612 3303	weiß	blanc	white	•	•	•	•		300	118"	50	1.47
1612 3347	schwarz	noir	black	•	•	•	•		300	118"	50	1.47
1612 3317	hellgrau	gris clair	light grey	•	•	•	•		310	122"	45	1.33
1612 3900	rohweiß	écru	ecru	•	•	•	•		310	122"	45	1.33
1612 3733	zinkgelb	jaune zinc	zinc yellow	•	•	•	•		310	122"	45	1.33
1612 3731	sonnengelb	jaune soleil	sun yellow	•	•	•	•		310	122"	45	1.33
1612 3739	orange	orange	orange	•	•	•	•		310	122"	45	1.33
1612 3462	rot	rouge	red	•	•	•	•		310	122"	45	1.33
1612 3184	marineblau	bleu marine	navy blue	•	•	•	•		310	122"	45	1.33
1612 3652	grün	vert	green	•	•	•	•		310	122"	45	1.33
1612 4110	weiß	blanc	white	•	•	•	•		420	13'9"	50	1.47
1612 4210	schwarz	noir	black	•	•	•	•		420	13'9"	50	1.47
1612 5030	weiß	blanc	white	•	•	•	•		520	17'0"	45	1.33
1612 5900	rohweiß	écru	ecru	•	•	•	•		520	17'0"	45	1.33



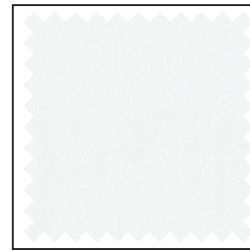
-3303 / -4110 / -5030



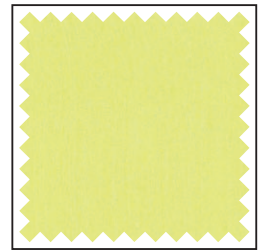
-3347 / -4210



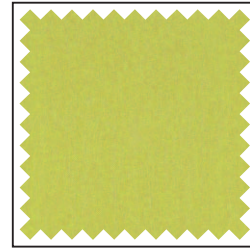
-3317



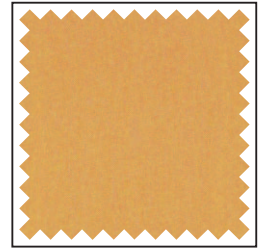
-3900 / -5900



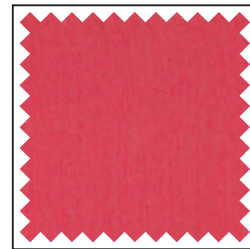
-3733



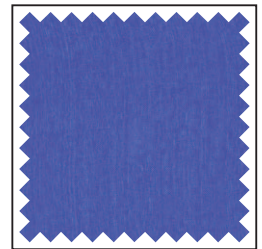
-3731



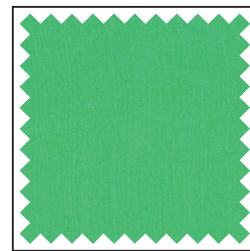
-3739



-3462



-3184



-3652

Auf Wunsch:
Professionell konfektionierte
Vorhänge aus unseren Ateliers.

Der Inhalt dieser Farbkarte ent-
spricht dem Stand zum Zeitpunkt
des Drucks.
Aktuellste Angaben entnehmen Sie
bitte den entsprechenden Daten-
blättern auf unserer Internetseite.

Sur demande :
Confection sur mesure dans nos
ateliers de couture.

Les informations contenues dans ce
nuancier sont valables à la date de
l'impression.
Pour les mises à jour, consulter
notre site internet.

On request:
Professional quality curtains
manufactured in our workshops.

All information and colour
specifications are valid at the time
of printing.
For latest product details please see
the respective online data sheet.



CS Taft

100 % Trevira CS.
 Permanent schwer entflammbar.
 Stücklängen ca. 30 und 60 lfm.

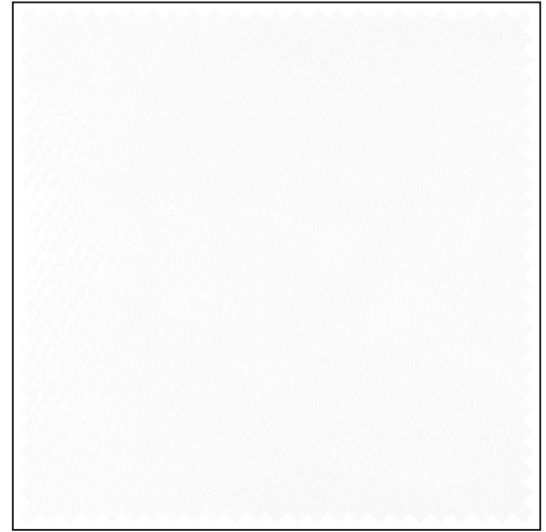
Taffetas CS

100 % trévira CS.
 Longueur des pièces env. 30 et 60 ml.

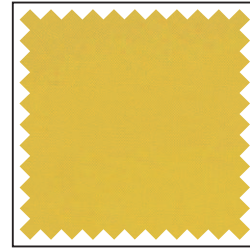
Taffeta CS

100 % Trevira CS.
 Inherently flame retardant.
 Piece lengths ~32.8 and 65.6 yds.

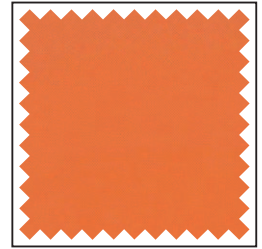
Art. / Réf.	Farben	Coloris	Colours	B1	M1	EN	EN* NFPA	↔	cm	ft/in	g/m ²	oz/yd ²
1614 3731	sonnengelb	jaune soleil	sun yellow	•	•	•	•	•	310	122"	80	2.36
1614 3545	orange	orange	orange	•	•	•	•	•	310	122"	80	2.36
1614 3464	rot	rouge	red	•	•	•	•	•	310	122"	80	2.36
1614 3156	blau	bleu	blue	•	•	•	•	•	310	122"	80	2.36
1614 3184	marineblau	bleu marine	navy blue	•	•	•	•	•	310	122"	80	2.36
1614 3678	moosgrün	vert mousse	moss	•	•	•	•	•	310	122"	80	2.36
1614 3313	hellgrau	gris clair	light grey	•	•	•	•	•	310	122"	80	2.36
1614 3303	weiß	blanc	white	•	•	•	•	•	310	122"	80	2.36
1614 3347	schwarz	noir	black	•	•	•	•	•	310	122"	80	2.36
1614 5303	weiß	blanc	white	•	•	•	•	•	520	17'0"	80	2.36



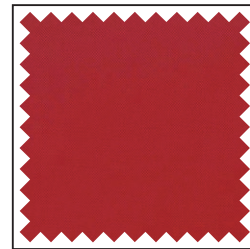
-3303 / -5303



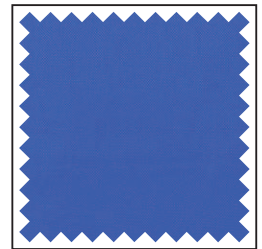
-3731



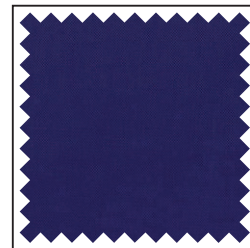
-3545



-3464



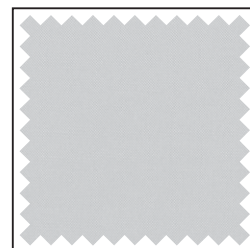
-3156



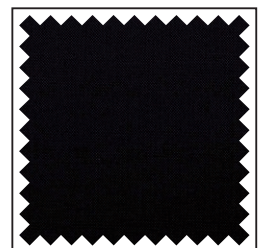
-3184



-3678



-3313



-3347

Ripstop

100 % Polyester.
 160 cm:
 Stücklängen ca. 100 lfm.
 505 cm:
 Stücklängen ca. 25 und 50 lfm.
 Nur in ganzen Stücken, gerollt
 lieferbar.

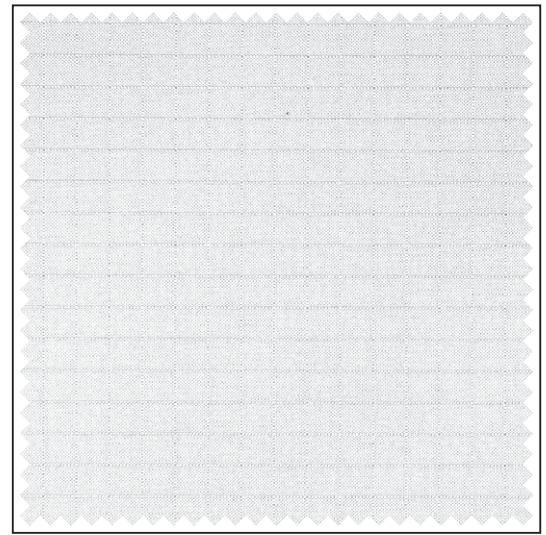
Toile Spie

100 % polyester.
 160 cm :
 Longueur des pièces env. 100 ml.
 505 cm :
 Longueur pièces env. 25 et 50 ml.
 Uniquement par rouleaux entiers.

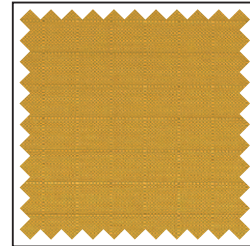
Ripstop

100 % Polyester.
 160 cm: Piece lengths approx.
 109.3 yds.
 505 cm: Piece lengths ~27.3 and
 54.6 yds.
 Available in full pieces only, rolled
 delivery.

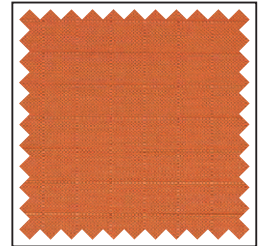
Art. / Réf.	Farben	Coloris	Colours	B1	M1	EN	EN* NFPA	↔	cm	ft/in	g/m ²	oz/yd ²
1615 1710	gelb	jaune	yellow	•	•	•			160	63"	100	2.95
1615 1720	orange	orange	orange	•	•	•			160	63"	100	2.95
1615 1400	rot	rouge	red	•	•	•			160	63"	100	2.95
1615 1510	blau	bleu	blue	•	•	•			160	63"	100	2.95
1615 1520	marineblau	bleu marine	navy blue	•	•	•			160	63"	100	2.95
1615 1100	weiß	blanc	white	•	•	•			160	63"	100	2.95
1615 1300	grau	gris	grey	•	•	•			160	63"	100	2.95
1615 1200	schwarz	noir	black	•	•	•			160	63"	100	2.95
1615 5100	weiß	blanc	white	•	•	•			505	16'7"	65	1.92



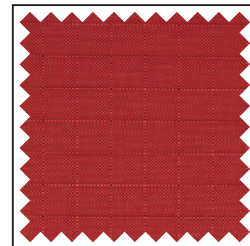
-1100 / -5100



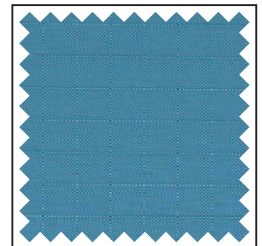
-1710



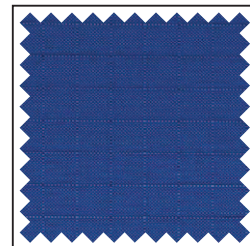
-1720



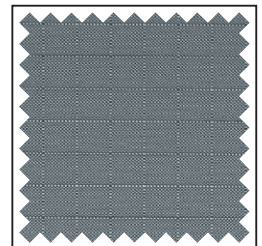
-1400



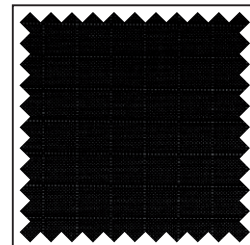
-1510



-1520



-1300



-1200

Gerriets GmbH
Im Kirchenhürstle 5-7
DE-79224 Umkirch
☎ +49 7665 960 0
☎ +49 7665 960 125
info@gerriets.com
www.gerriets.com

Gerriets S. A. R. L.
Rue du Pourquoi Pas
FR-68600 Volgelsheim
☎ +33 3 89 22 70 22
☎ +33 3 89 22 70 50
info@gerriets.fr
www.gerriets.fr

Gerriets International Inc.
130 Winterwood Avenue
US-Ewing NJ 08638
☎ +1 609 771 8111 (New Jersey)
☎ +1 725 696 5900 (Las Vegas)
☎ +1 609 771 8118
info@gerriets.us
www.gerriets.us

Gerriets Great Britain Ltd.
18 Verney Road
GB-London SE16 3DH
☎ +44 20 7639 7704
☎ +44 20 7732 5760
info@gerriets.co.uk
www.gerriets.co.uk

Gerriets Austria CEE GmbH
Gorskistraße 8
AT-1230 Wien
☎ +43 1 6000 600 0
☎ +43 1 6032 585
info@gerriets.at
www.gerriets.at

Gerriets Sp. z o.o.
ul. Arkuszowa 155
PL-01-934 Warszawa
☎ +48 22 6339 807
☎ +48 797 654 607
biuro@gerriets.pl
www.gerriets.pl

Gerriets España S. L.
Pol. Ind. Camporosso Sur
Avda. de Las Moreras
Sector 1, Naves 1-2-3
ES-28350 Ciempozuelos, Madrid
☎ +34 91 134 5022
☎ +34 91 134 5084
info@gerriets.es
www.gerriets.es

Gerriets Belgique
Distribué par :
Gerriets S. A. R. L.
Rue du Pourquoi Pas
FR-68600 Volgelsheim
☎ +33 3 89 22 70 22
☎ +33 3 89 22 70 50
info@gerriets.fr
www.gerriets.fr

Gerriets Nederland
LevTec BV
Pieter Braaijweg 51
NL-1114 AJ Amsterdam-Duivendrecht
☎ +31 20 40 82 553
☎ +31 20 40 82 662
info@gerriets.nl
www.gerriets.nl

Gerriets Italia
Risam for show
Viale Spagna 150 / B
IT-20093 Cologno Monzese (MI)
☎ +39 02 2532 113
☎ +39 02 2532 130
info@gerriets.it
www.gerriets.it

Gerriets Hellas
Stage Art EPE
Stournari 27B
GR-10682 Athens
☎ +30 210 3836 715
☎ +30 210 3811 929
info@gerriets.gr
www.gerriets.gr

Gerriets Turkey
Benart Sound-Light-Vision-Stage System
Ibrahim Karaoglanoglu Cad.
Altinok Plaza No:37 K:3
Seyrantepe – Kağıthane
TR-34418 Istanbul
☎ +90 212 254 33 43
☎ +90 212 254 33 53
benart@benart.net
www.benart.net

Gerriets Slovenija
(Croatia, Bosnia and Herzegovina,
Serbia, Montenegro, Macedonia,
Kosovo)
MAORI, d.o.o.
Špruha 14
SI-1236 loc Trzin
☎ +386 143 052 79
☎ +386 590 27 508
info@gerriets.si
www.gerriets.si

Gerriets Hungária
Gépbér Színpad Kft.
Hajóállomás u. 1.
HU - 1095 Budapest
☎ +36 1 445 4811
☎ +36 1 445 4820
info@gerriets.hu
www.gerriets.hu

Gerriets Romania
Distributed by:
Gerriets Austria CEE GmbH
Gorskistraße 8
AT-1230 Wien
☎ +43 1 6000 600 0
☎ +43 1 6032 585
info@gerriets.at
www.gerriets.at

Gerriets Bulgaria
Landau Impex GmbH
Shavarski pat Str. No. 3
BG-1000 Sofia, Losenetz
☎ +35 92 862 92 44
☎ +35 92 868 71 16
info@gerriets.bg
www.gerriets.bg

Gerriets Korea Co., Ltd.
22-12, Ogab-gil 192beon-gil,
Gamgok-myeon, Eumseong-gun,
Chungcheongbuk-do
Korea 369-852
☎ +82 2 477 7713
☎ +82 2 477 1490
info@gerriets.co.kr
www.gerriets.co.kr

Gerriets South Africa
AVL Distribution
P.O.Box 70740
4, Ealing Crescent
ZA-2021 Bryanston
☎ +27 11 463 5804
☎ +27 11 463 5809
info@gerriets.co.za
www.gerriets.co.za

Gerriets Brasil
Stefan Herbert Bottcher Comercio
Rua dos Inconfidentes 867 2º andar
Bairro Savassi
cep. 30140-120 Belo Horizonte MG
Brasil
☎ +55 31 2537 5468
☎ +55 31 99201 4700
stefanbottcher@gerrietsbrasil.com.br
www.gerriets.com/br

Gerriets Czech Republic / Slovakia
Gerriets CZ s.r.o.
Věstonická 4289/12
CZ - 628 00 Brno
☎ +420 731 064 022
☎ +420 731 197 204
info@gerriets.cz
www.gerriets.cz

Gerriets Taiwan
Unicond Audio Co., Ltd.
A Division of the ROUGE-Group
5-5F., No. 1071, Chung Cheng Rd.
Taoyuan Dist., Taoyuan City 33045
Taiwan (ROC)
☎ +886 3 358 39 58
☎ +886 3 358 39 55
joycek@unicond.com.tw

