
AURORA

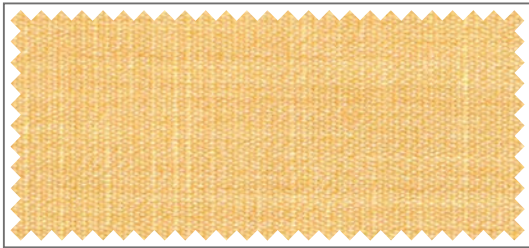


Bitte beachten: In der Darstellung der Muster als PDF-Datei kann es technisch bedingt zu Farbabweichungen kommen.

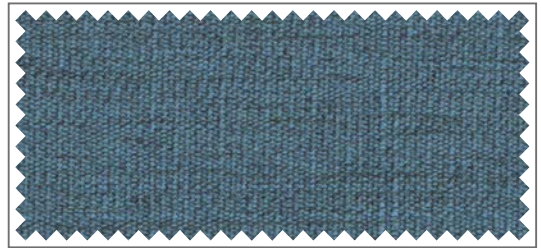
Attention : Photos non contractuelles.

Please note: Photos of samples shown in pdf-file may vary slightly in colour due to technical reasons.

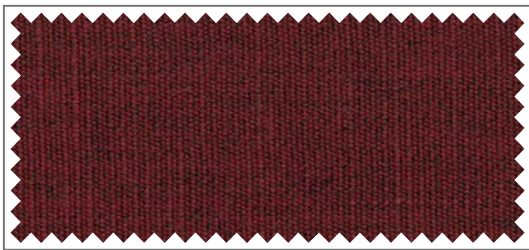




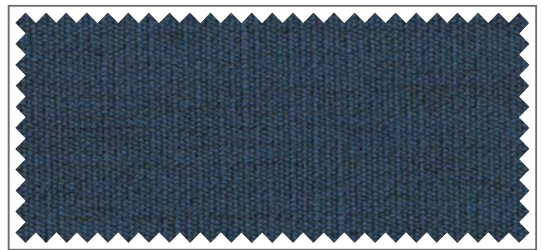
-1221



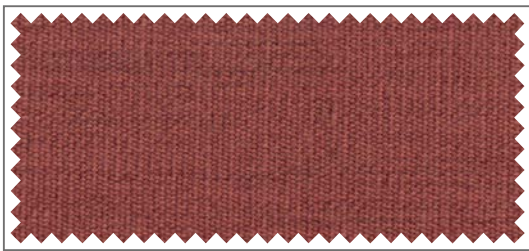
-1225



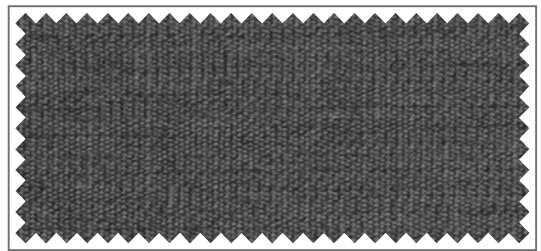
-1213



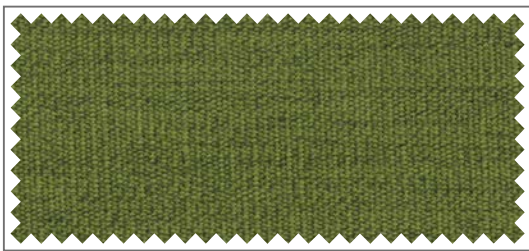
-1245



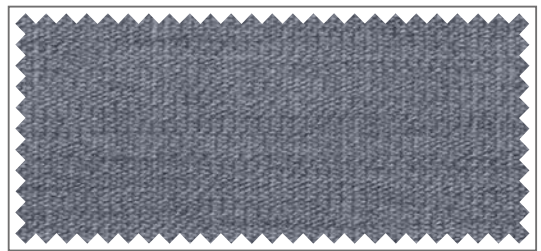
-1223



-1248



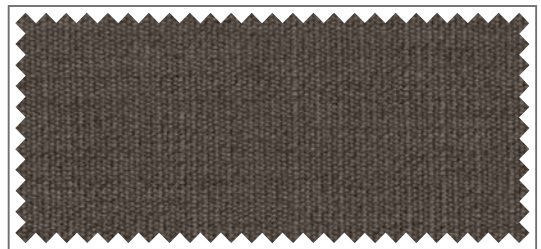
-1226



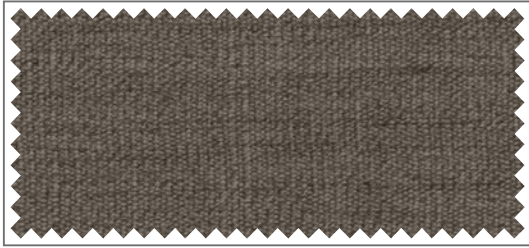
-1258



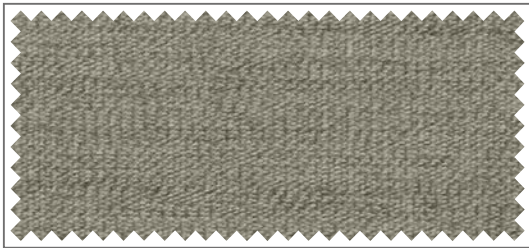
-1246



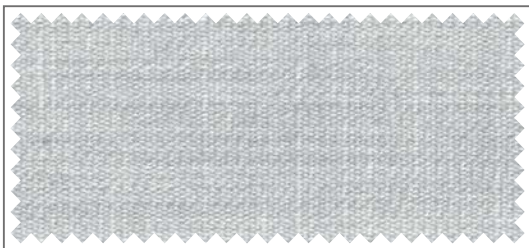
-1208



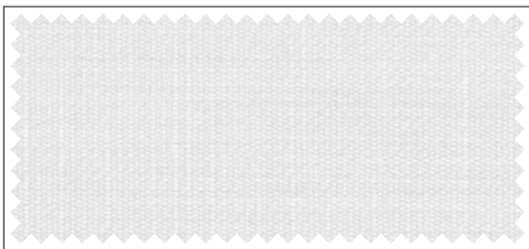
-1278



-1288



-1240



-1209

AURORA

AURORA besticht durch seine schlichte, feingliedrige Optik.

Das zeitlose, zurückhaltende Textil fügt sich so bestens in moderne Architektur ein.

Erhältlich in einem breiten Farbspektrum.

AURORA séduit par son aspect sobre et sa structure filigrane.

Ce textile discret et intemporel - disponible dans une large gamme de couleurs - s'intègre harmonieusement dans une architecture moderne.







AURORA impresses with its simple, delicate appearance.

The timeless, unobtrusive textile fits perfectly into modern architecture.

Available in a wide range of colours.

1a11 1221	gelb	jaune	yellow
1a11 1213	dunkelrot	rouge foncé	dark red
1a11 1223	hellrot	rouge clair	light red
1a11 1226	dunkelgrün	vert foncé	dark green
1a11 1246	hellgrün	vert clair	light green
1a11 1225	mittelblau	bleu moyen	medium blue
1a11 1245	dunkelblau	bleu foncé	dark blue
1a11 1248	anthrazit	anthracite	anthracite
1a11 1258	grau	gris	grey
1a11 1208	grau-braun	gris-brun	grey-brown
1a11 1278	hellbraun	brun clair	light brown
1a11 1288	kieselgrau	gris silex	pebble grey
1a11 1230	hellgrau	gris clair	light grey
1a11 1240	silbergrau	argent gris	grey silver
1a11 1209	weiß	blanc	white

AURORA

Artikelnummer / Numéro d'article / Article number	1a11-
Material / Matériau / Material	100 % Polyester Trevira CS 
Breite / Largeur / Width	±300 cm ±118"
Gewicht / Poids / Weight	±220 g/m² ±6.49 oz/yd²
Brandklasse / Classement au feu / Flame Retardant Classification	DIN 4102 B1 / M1 / BS 5867 / DIN EN 13773
Stüklängen / Longueur des pièces / Piece lengths	±30 lfm ±32.8 yds
Sonderfarben ab / Coloris spéciaux à partir / Minimum quantity for custom dyed colours	±200 lfm ±218.7 yds
Bewerteter Schallabsorptionsgrad nach ISO 11654 / Degré d'absorption acoustique selon ISO 11654 / Acoustic absorption value	$\alpha_W = 0,55$
Schallabsorberklasse / Catégorie d'absorption acoustique / Acoustic absorption class	D
Pflege / Entretien / Care	    
Lichtechtheit / Résistance à la lumière / Light fastness (EN 14465)	Note 6
Reibechtheit / Résistance au pilling / Pilling resistance (EN 14465)	3-4 (trocken & nass / sec & mouillé / try & wet)

Der Inhalt dieser Farbkarte entspricht dem Stand zum Zeitpunkt des Drucks. Aktuellste Angaben entnehmen Sie bitte den entsprechenden Datenblättern auf unserer Internetseite. Erläuterungen der Brandschutznormen B1, M1, BS, EN, EN* und NFPA unter gerriets.com. Auf Wunsch: Professionell konfektionierte Textilien aus unseren Ateliers / Les informations contenues dans ce nuancier sont valables à la date de l'impression. Pour les mises à jour, consulter notre site internet. Informations concernant les normes de feu B1, M1, BS, EN, EN* et NFPA, consulter notre site gerriets.com. Sur demande : Textiles professionnels confectionnés dans nos ateliers / All information and colour specifications are valid at the time of printing. For latest product details please see the respective online data sheet. For explanation of flame retardant standards B1, M1, BS, EN, EN* and NFPA, please go to gerriets.com. On request: Professional manufacture of our textiles in our workshops.