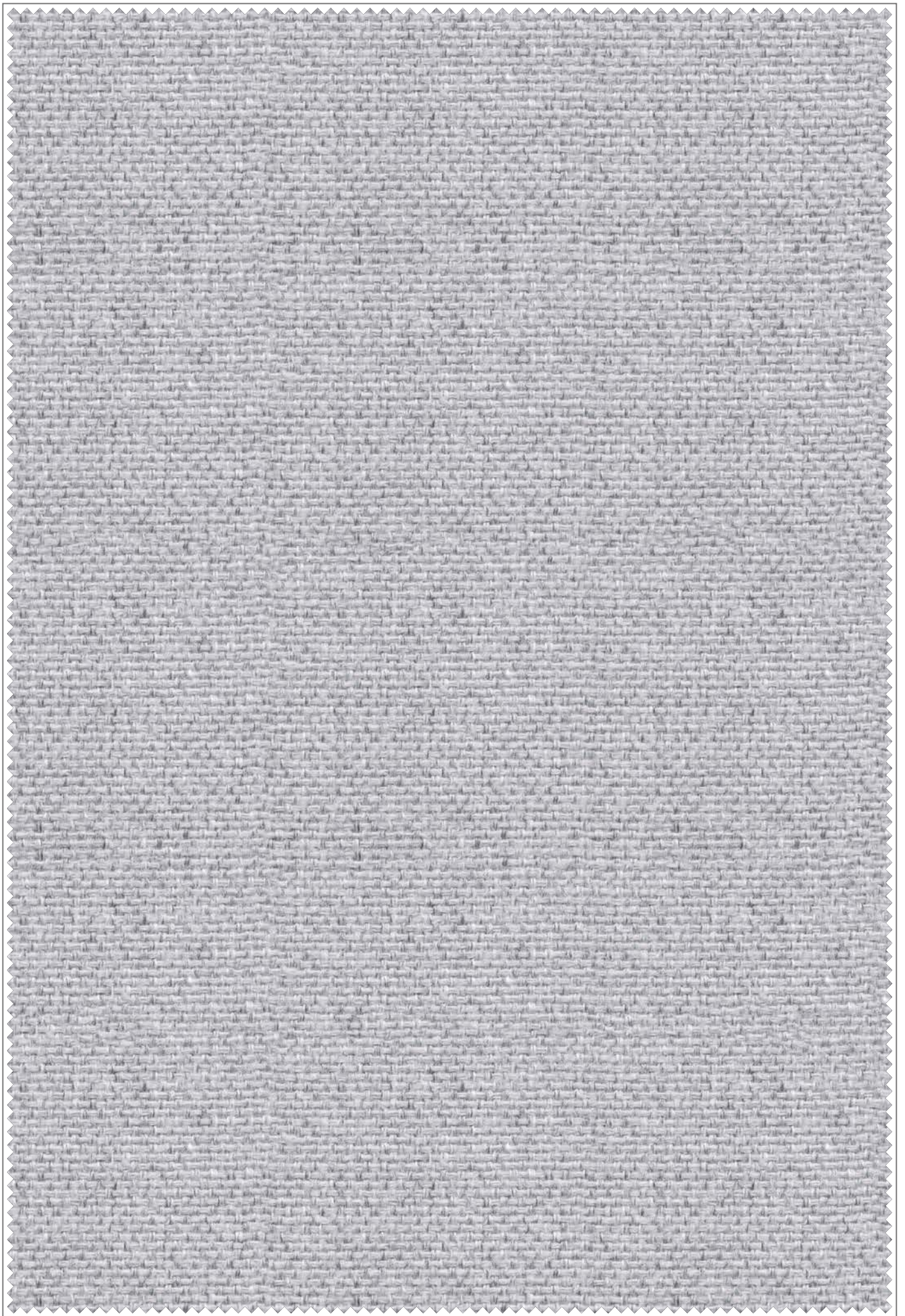
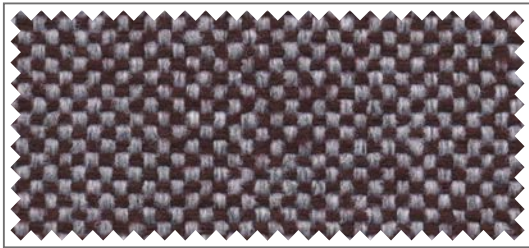

FLORA



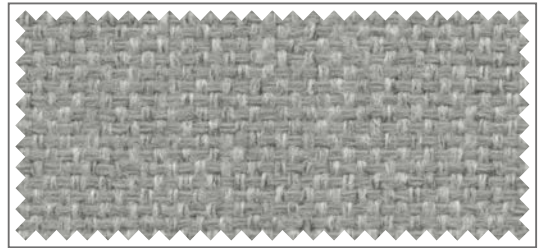
Bitte beachten: In der Darstellung der Muster als PDF-Datei kann es technisch bedingt zu Farbabweichungen kommen.
Attention : Photos non contractuelles.

Please note: Photos of samples shown in pdf-file may vary slightly in colour due to technical reasons.

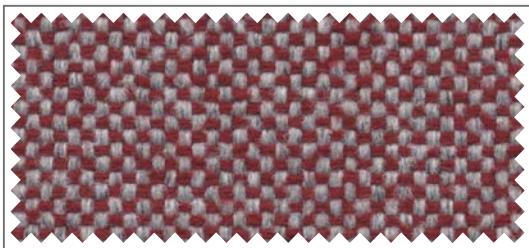




-9407



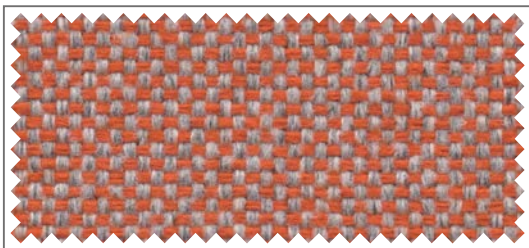
-9106



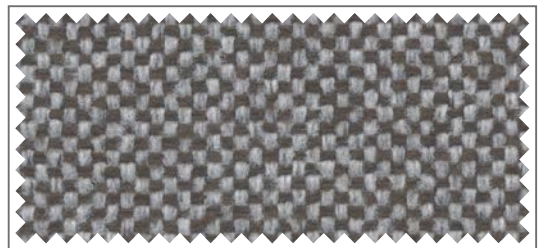
-9494



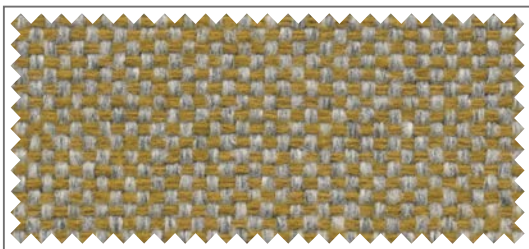
-9101



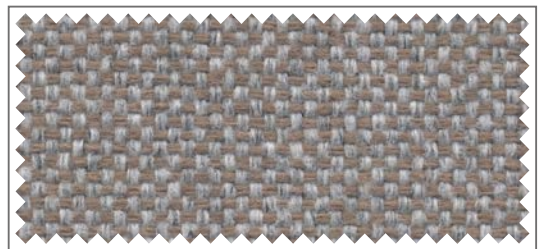
-9451



-9212



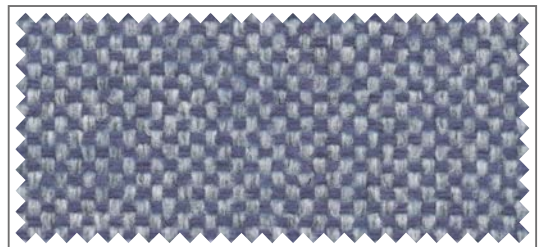
-9330



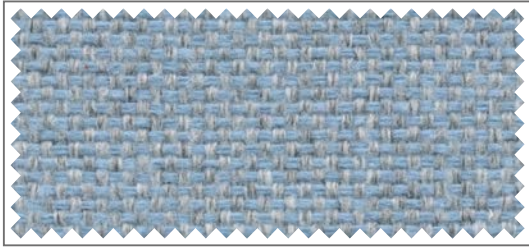
-9224



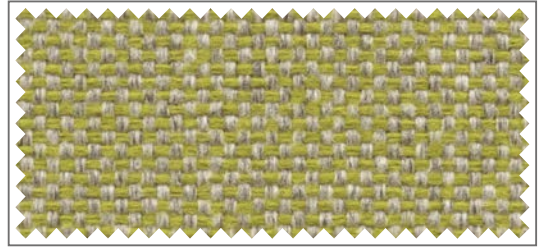
-9108



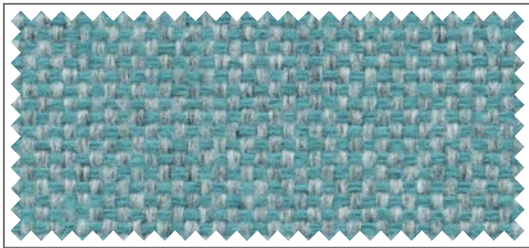
-9613



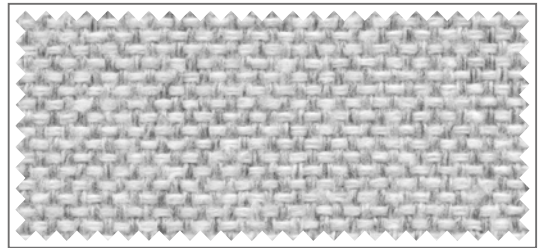
-9656



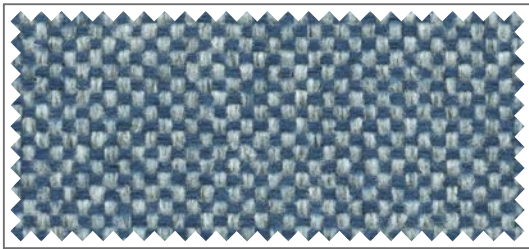
-9709



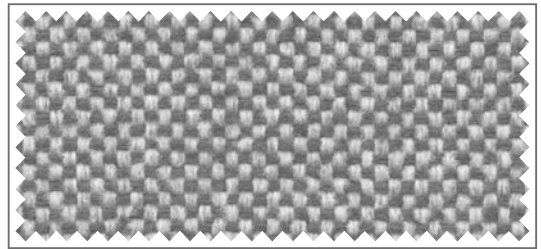
-9607



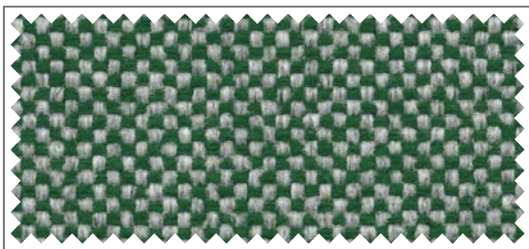
-9000



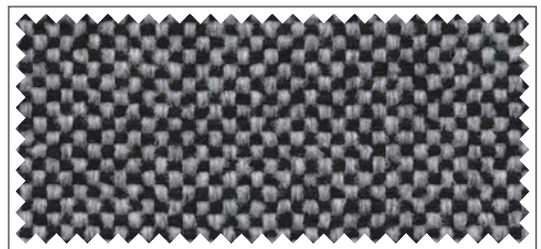
-9614



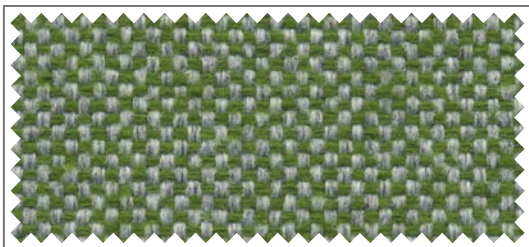
-9809



-9702



-9833



-9725

FLORA





FLORA – leger, ungezwungen und strapazierfähig.
Das zweifarbige, garngefärbte Textil verbindet eine rustikale Optik mit einer ambitionierten Ästhetik.

Léger et résistant, FLORA est un textile bicolore avec teinture directe du fil combinant un look rustique et une esthétique ambitieuse.

FLORA is casual and hard-wearing. The two-tone, yarn-dyed textile combines an architectural, rustic look with an ambitious aesthetic.

1a12 9407	lila	lilas	lilac
1a12 9494	rot	rouge	red
1a12 9451	orange	orange	orange
1a12 9330	gelbgrün	jaune vert	lime green
1a12 9108	sandbraun	brun sable	sand brown
1a12 9106	kieselgrau	gris silex	pebble grey
1a12 9101	graubeige	gris beige	grey beige
1a12 9212	grau-braun	gris-brun	grey-brown
1a12 9224	mittelbraun	brun moyen	medium brown
1a12 9613	marineblau	bleu marine	navy blue
1a12 9656	taubenblau	bleu pigeon	pigeon blue
1a12 9607	eisblau	bleu glacier	ice blue
1a12 9614	blau	bleu	blue
1a12 9702	dunkelgrün	vert foncé	dark green
1a12 9725	grün	vert	green
1a12 9709	pistaziengrün	vert pistache	pistachio green
1a12 9000	grau	gris	grey
1a12 9801	hellgrau	gris clair	light grey
1a12 9809	dunkelgrau	gris foncé	dark grey
1a12 9833	schwarz	noir	black

FLORA

Artikelnummer / Numéro d'article / Article number	1a12-
Material / Matériau / Material	100 % Polyester Trevira CS Inherently flame retardant
Breite / Largeur / Width	±140 cm ±55"
Gewicht / Poids / Weight	±375 g/m² ±11.06 oz/yd²
Brandklasse / Classement au feu / Flame Retardant Classification	DIN 4102 B1 / DIN EN 13501-1 / DIN EN 13773 / BS 5867
Stücklängen / Longueur des pièces / Piece lengths	±25 lfm ±27.3 yds
Sonderfarben ab / Coloris spéciaux à partir / Minimum quantity for custom dyed colours	±200 lfm ±218.7 yds
Bewerteter Schallabsorptionsgrad nach ISO 11654 / Degré d'absorption acoustique selon ISO 11654 / Acoustic absorption value	$\alpha_W = 0,65$
Schallabsorberklasse / Catégorie d'absorption acoustique / Acoustic absorption class	C
Pflege / Entretien / Care	   
Lichtechtheit / Résistance à la lumière / Light fastness (EN 14465)	Note 6
Reibechtheit / Résistance au pilling / Pilling resistance (EN 14465)	4-5
Scheuerfestigkeit / Abrasion resistance / Résistance à l'abrasion (Martindale)	80.000
Oeko-Tex Standard 100	

Der Inhalt dieser Farbkarte entspricht dem Stand zum Zeitpunkt des Drucks. Aktuellste Angaben entnehmen Sie bitte den entsprechenden Datenblättern auf unserer Internetseite. Erläuterungen der Brandschutznormen B1, M1, BS, EN, EN* und NFPA unter gerriets.com. Auf Wunsch: Professionell konfektionierte Textilien aus unseren Ateliers / Les informations contenues dans ce nuancier sont valables à la date de l'impression. Pour les mises à jour, consulter notre site internet. Informations concernant les normes de feu B1, M1, BS, EN, EN* et NFPA, consulter notre site gerriets.com. Sur demande : Textiles professionnels confectionnés dans nos ateliers / All information and colour specifications are valid at the time of printing. For latest product details please see the respective online data sheet. For explanation of flame retardant standards B1, M1, BS, EN, EN* and NFPA, please go to gerriets.com. On request: Professional manufacture of our textiles in our workshops.