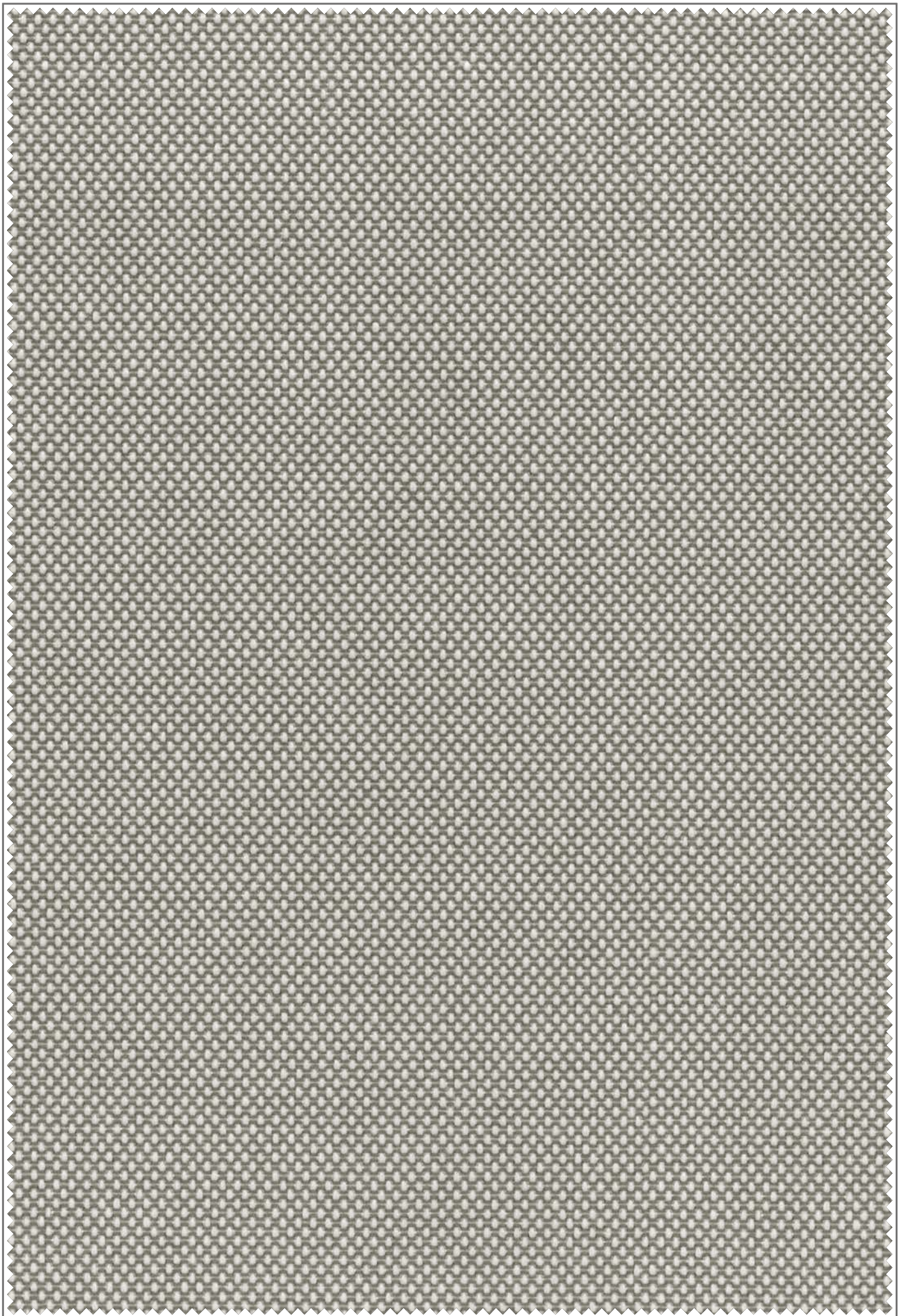
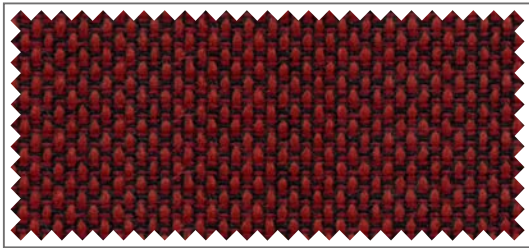

JUNO



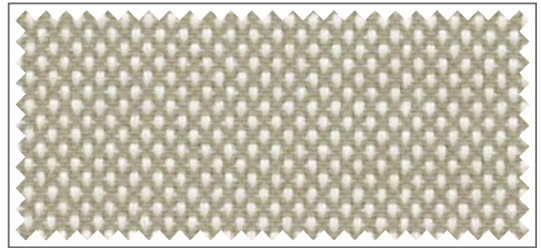
Bitte beachten: In der Darstellung der Muster als PDF-Datei kann es technisch bedingt zu Farbabweichungen kommen.
Attention : Photos non contractuelles.

Please note: Photos of samples shown in pdf-file may vary slightly in colour due to technical reasons.

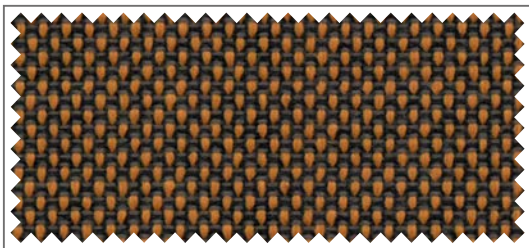




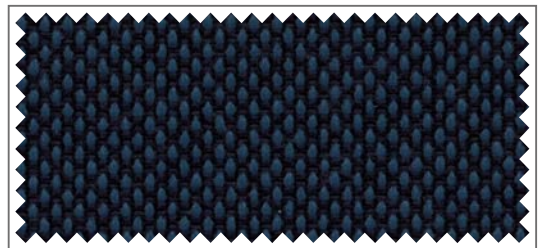
-9404



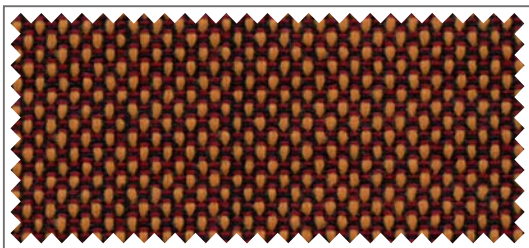
-9122



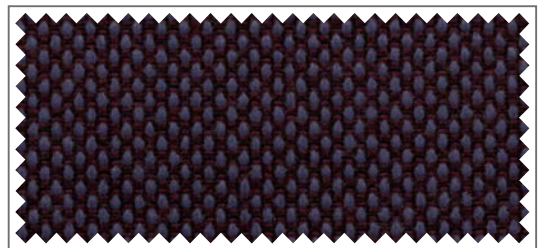
-9302



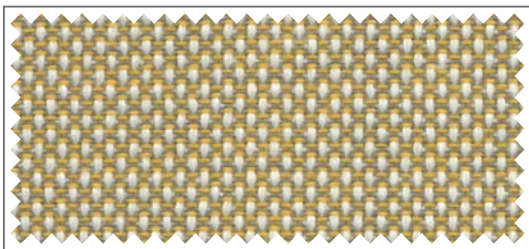
-9606



-9304



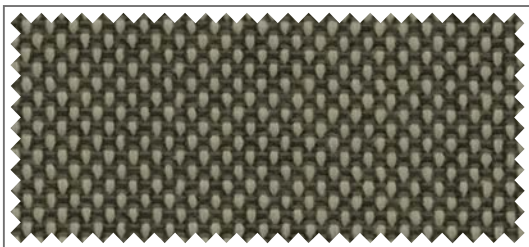
-9604



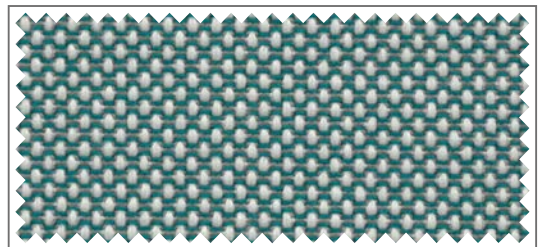
-9311



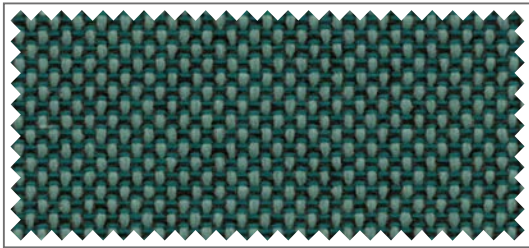
-9626



-9202



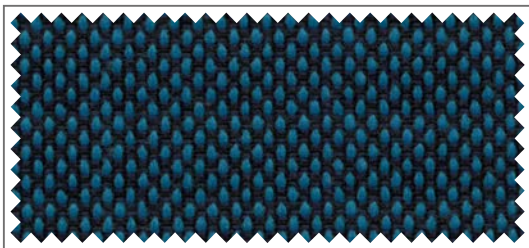
-9107



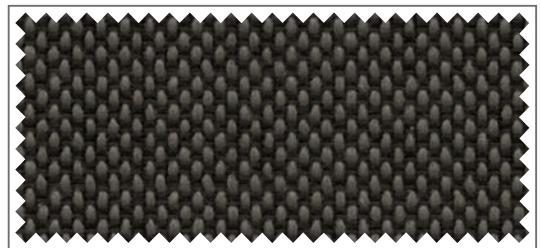
-9607



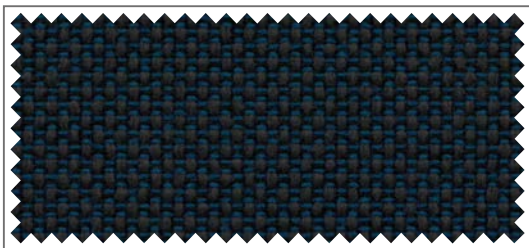
-9727



-9616



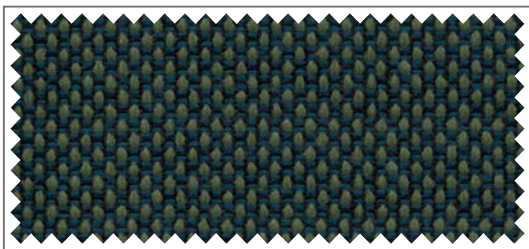
-9818



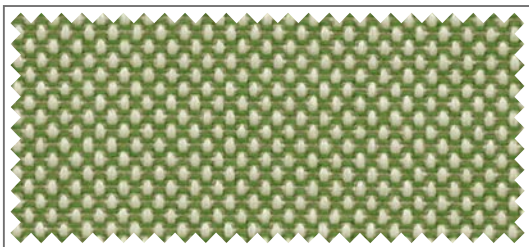
-9608



-9833



-9716



-9701

JUNO

JUNO ist zeitlos, klassisch und unverkennbar zugleich.

Die subtil abgestimmten Farbkombinationen unterstreichen den hochwertigen, exklusiven Charakter und die anspruchsvolle Ästhetik des garngefärbten Textiles.

JUNO est intemporel, classique tout en étant unique.





Les combinaisons de couleurs harmonieuses soulignent le caractère raffiné ainsi que l'esthétique sophistiqué du textile teint en fil.

JUNO is timeless, classic and unmistakable at the same time.

The subtly coordinated colour combinations underline the high-quality, exclusive character and the sophisticated aesthetics of the yarn-dyed textile.

1a13 9404	rot	rouge	red
1a13 9302	orange	orange	orange
1a13 9304	orangebraun	brun orange	orange brown
1a13 9311	sandgelb	jaune sable	sand yellow
1a13 9202	mittelgrau	gris moyen	medium grey
1a13 9168	hellgrau	gris clair	gris grey
1a13 9122	beige	beige	beige
1a13 9606	blau	bleu	blue
1a13 9604	rotlila	rouge lilas	red lilac
1a13 9626	dunkelblau	bleu foncé	dark blue
1a13 9107	hellblau	bleu clair	light blue
1a13 9607	türkis	turquoise	turquoise
1a13 9616	taubenblau	bleu pigeon	pigeon blue
1a13 9608	saphirblau	saphir	sapphire
1a13 9716	blaugrün	vert bleu	blue green
1a13 9701	hellgrün	vert clair	light green
1a13 9727	dunkelgrün	vert foncé	dark green
1a13 9818	dunkelgrau	gris foncé	dark grey
1a13 9833	anthrazit	anthracite	anthracite

JUNO

Artikelnummer / Numéro d'article / Article number	1a13-
Material / Matériau / Material	100 % Polyester Trevira CS Inherently flame retardant
Breite / Largeur / Width	±140 cm ±55"
Gewicht / Poids / Weight	±490 g/m² ±14.45 oz/yd²
Brandklasse / Classement au feu / Flame Retardant Classification	DIN 4102 B1 / DIN EN 13501-1 / DIN EN 13773 / BS 5867 / M1
Stücklängen / Longueur des pièces / Piece lengths	±25 lfm ±27.3 yds
Sonderfarben ab / Coloris spéciaux à partir / Minimum quantity for custom dyed colours	±200 lfm ±218.7 yds
Pflege / Entretien / Care	   
Lichtechtheit / Résistance à la lumière / Light fastness (EN 14465)	Note 6
Reibechtheit / Résistance au pilling / Pilling resistance (EN 14465)	4-5
Scheuerfestigkeit / Abrasion resistance / Résistance à l'abrasion (Martindale)	80.000
Oeko-Tex Standard 100	

Der Inhalt dieser Farbkarte entspricht dem Stand zum Zeitpunkt des Drucks. Aktuellste Angaben entnehmen Sie bitte den entsprechenden Datenblättern auf unserer Internetseite. Erläuterungen der Brandschutznormen B1, M1, BS, EN, EN* und NFPA unter gerriets.com. Auf Wunsch: Professionell konfektionierte Textilien aus unseren Ateliers / Les informations contenues dans ce nuancier sont valables à la date de l'impression. Pour les mises à jour, consulter notre site internet. Informations concernant les normes de feu B1, M1, BS, EN, EN* et NFPA, consulter notre site gerriets.com. Sur demande : Textiles professionnels confectionnés dans nos ateliers / All information and colour specifications are valid at the time of printing. For latest product details please see the respective online data sheet. For explanation of flame retardant standards B1, M1, BS, EN, EN* and NFPA, please go to gerriets.com. On request: Professional manufacture of our textiles in our workshops.